



**5 1/2" (C/L TO C/L) DOOR PULL**

**DR1870**

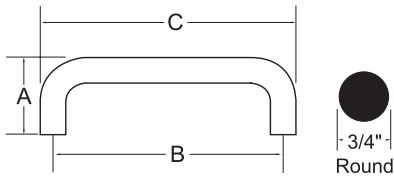
- Easy to install.
- 5 1/2" center to center.
- Finishes: 3, 4, 5, 10, 10B, 26, 26D, 27, 32D.



**3/4" ROUND DOOR PULL**

**DR1875**

- Easy to install.
- Made from the finest architectural brass, bronze, stainless steel, and aluminum.
- Finishes: 3, 10, 10B, 26, 26D, 27/28, 32D.



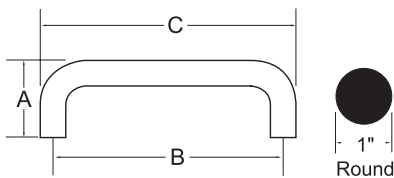
PRODUCT NO.	PROJ. "A"	C/L TO C/L "B"	LENGTH "C"
1875-6	2 1/4"	6"	6 3/4"
1875-8		8"	8 3/4"
1875-10		10"	10 3/4"



**1" ROUND DOOR PULL**

**DR1885**

- Easy to install.
- Made from the finest architectural brass, bronze, stainless steel, and aluminum.
- Finishes: 3, 10, 10B, 26, 26D, 27/28, 32D.



PRODUCT NO.	PROJ. "A"	C/L TO C/L "B"	LENGTH "C"
1885-8	2 1/2"	8"	9"
1885-10		10"	11"
1885-12		12"	13"



### 7" (C/L TO C/L) DOOR PULL

**DR1880**

- Easy to install.
- 7" center to center.
- Finishes: 3, 4, 5, 10, 10B, 26, 26D, 27, 32D.



### 9" (C/L TO C/L) DOOR PULL

**DR1890**

- Easy to install.
- 9" center to center.
- FINISHES: 3, 4, 5, 10, 10B, 26, 26D, 27, 32D.



### 7" (C/L TO C/L) DECORATIVE DOOR PULL

**DR1920**

- 7" centers.
- Available in all architectural finishes.
- Crafted from solid brass or aluminum.
- Furnished with screws and washers.



### PULL PLATE

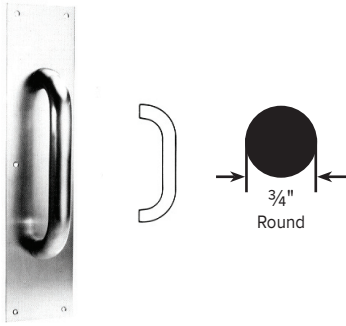
**DR1860**

- Easy to install.
- 4" x 16" with 5 1/2" centers on pull 2" projection.
- Finishes: 3, 4, 5, 10, 10B, 26, 26D, 27, 32D.

**PULL PLATE 3/4" ROUND**

**DR187PP**

- Centered on plates up to 4" wide.
- Offset 2" from the edge on plates wider than 4".
- Finishes: 3, 10, 10B, 26, 26D, 27/28, 32D.

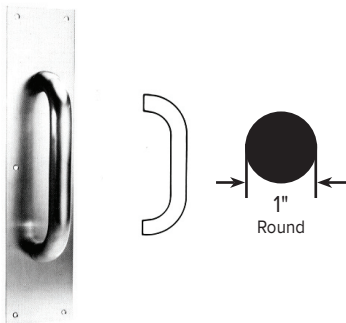


PRODUCT NO.	PLATE SIZE	PULL C TO C
187PP-1	3 1/2" x 15"	6"
187PP-2	4" x 16"	6"
187PP-3	6" x 16"	6"
187PP-4	3 1/2" x 15"	8"
187PP-5	4" x 16"	8"
187PP-6	6" x 16"	8"
187PP-7	3 1/2" x 15"	10"
187PP-8	4" x 16"	10"
187PP-9	6" x 16"	10"

**PULL PLATE 1" ROUND**

**DR188PP**

- Centered on plates up to 4" wide.
- Offset 2" from the edge on plates wider than 4".
- Finishes: 3, 10, 10B, 26, 26D, 27/28, 32D.

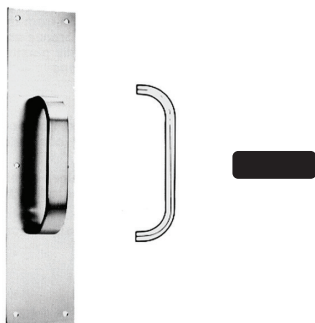


PRODUCT NO.	PLATE SIZE	PULL C TO C
188PP-1	3 1/2" x 15"	6"
188PP-2	4" x 16"	6"
188PP-3	6" x 16"	6"
188PP-4	3 1/2" x 15"	8"
188PP-5	4" x 16"	8"
188PP-6	6" x 16"	8"
188PP-7	3 1/2" x 15"	10"
188PP-8	4" x 16"	10"
188PP-9	6" x 16"	10"

**PULL PLATE**

**DR389PP**

- Centered on plates up to 4" wide.
- Offset 2" from the edge on plates wider than 4".
- Finishes: 3, 10, 10B, 26, 26D, 27/28, 32D.



PRODUCT NO.	PLATE SIZE	PULL C TO C
389PP-1	3 1/2" x 15"	7"
389PP-2	4" x 16"	7"
389PP-3	6" x 16"	7"
389PP-4	3 1/2" x 15"	9"
389PP-5	4" x 16"	9"
389PP-6	6" x 16"	9"



### PULL PLATE

**DR1930**

- Plate: 3 1/2" x 16" x 16 GA.
- Pull: 7" centers.
- Available in anodized aluminum (PVC coated), 304 stainless steel (PVC coated), solid architectural grade brass and bronze (polished to any finish).
- Electrostatically powder coated.



### HEAVY DUTY PULL PLATE

**DR1940**

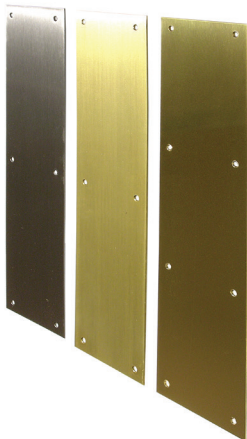
- Plate: 2 1/2" x 16" x 1/8".
- Pull: 7" centers.
- Available in anodized aluminum (PVC coated), 304 stainless steel (PVC coated), solid architectural grade brass and bronze (polished to any finish).
- Electrostatically powder coated.



### KICK PLATE (0.50)

**DR1900**

- Easy to install.
- All sizes available.
- Double sided tape optional.
- Available: Anodized aluminum (PVC coated), 304 stainless steel (PVC coated), solid architectural grade brass and bronze (polished to any finish).
- Electrostatically power coated.



### PUSH PLATE

**DR1910**

- Easy to install.
- All sizes available.
- Double sided tape optional.
- Available: Anodized aluminum (PVC coated), 304 stainless steel (PVC coated), solid architectural grade brass and bronze (polished to any finish).
- Electrostatically power coated.